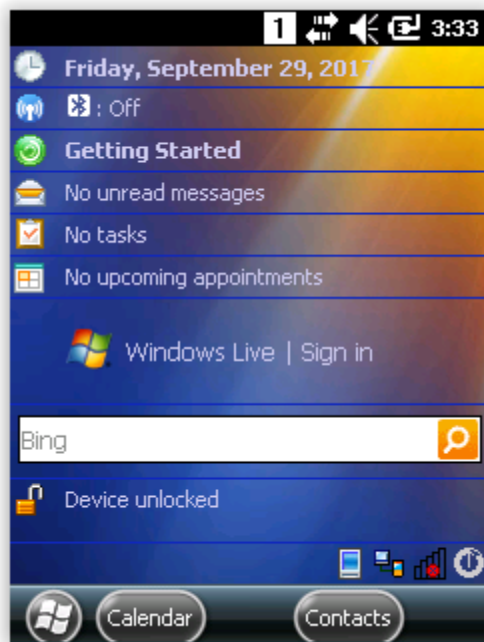




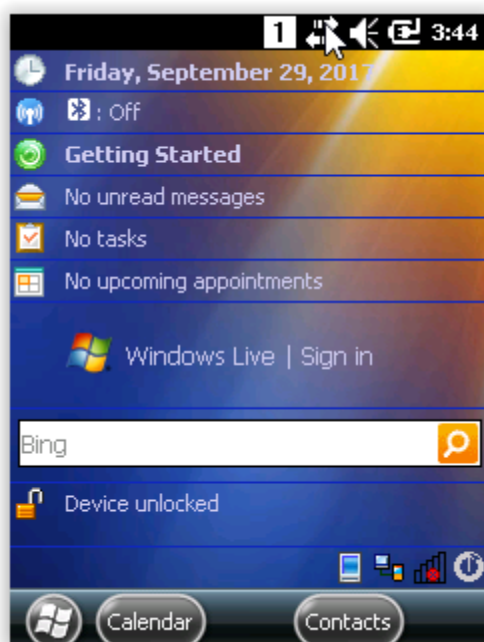
## Honeywell Dolphin Wireless Setup Guide



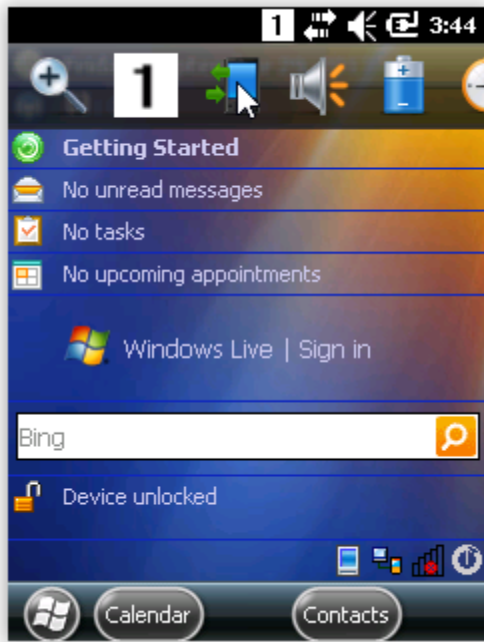
Usually this is the first screen you will see.

Follow the mouse pointer in the screenshots below to connect your PDT to your wireless network.

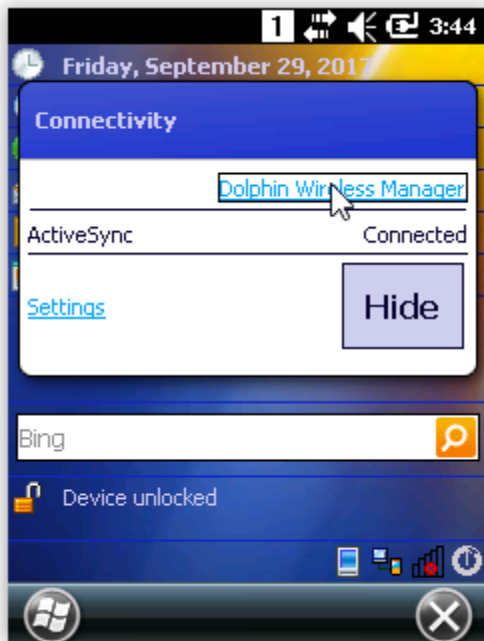
You will need to know your wireless password before starting this guide.



Click in the top bar on the two arrows (there will be a small 'x' below them)



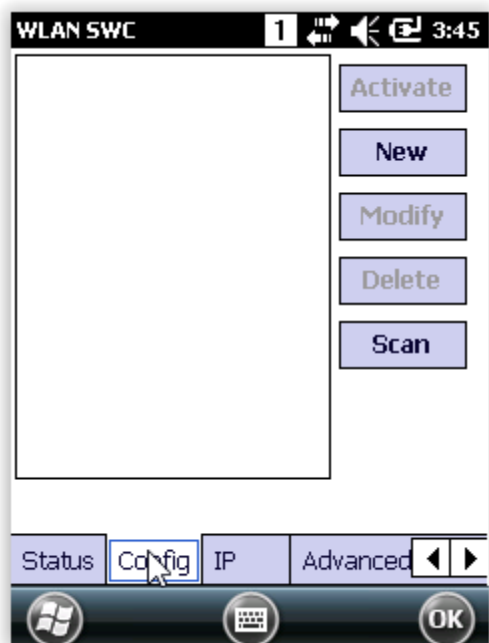
Click on the PDT with the green arrows



Select Dolphin Wireless Manager

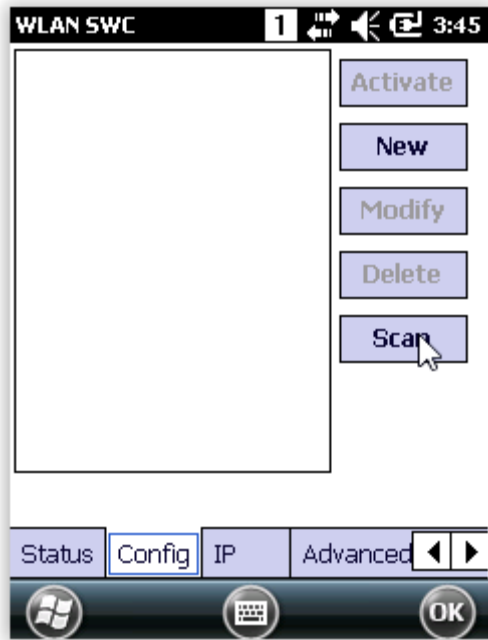


Select WLAN Settings



Wireless profiles are created here. If you are going to be using the PDT in multiple locations, you need to setup wifi profiles for each location here and Activate the appropriate profile for each location as you move it.

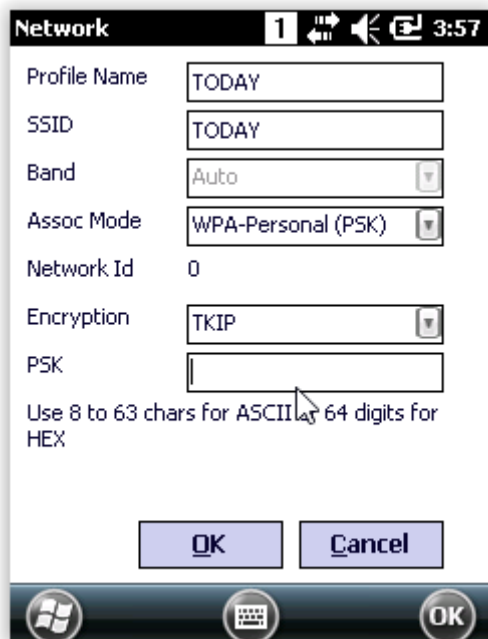
Start by selecting the Config tab



### Select Scan

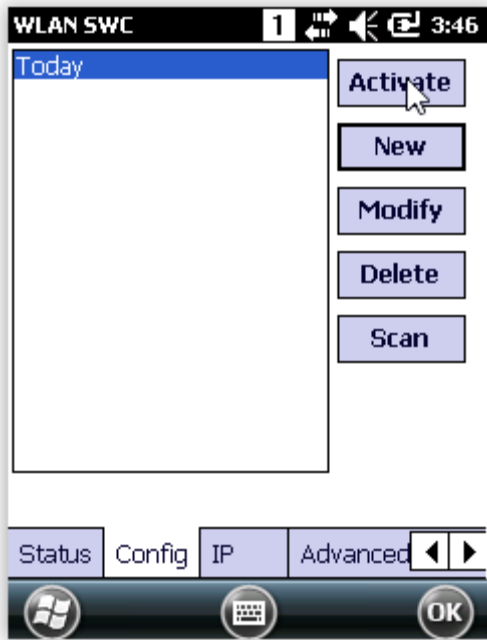
If your network is found by the scan, enter your PSK (Password)

If your network is not found by the scan, select New and input your SSID, PSK and Assoc mode manually.

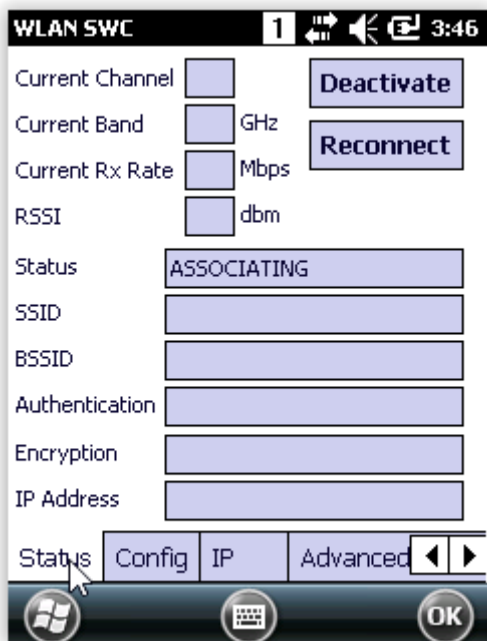


Name your profile, enter your SSID and ASSOC Mode if manually entering details followed by your password

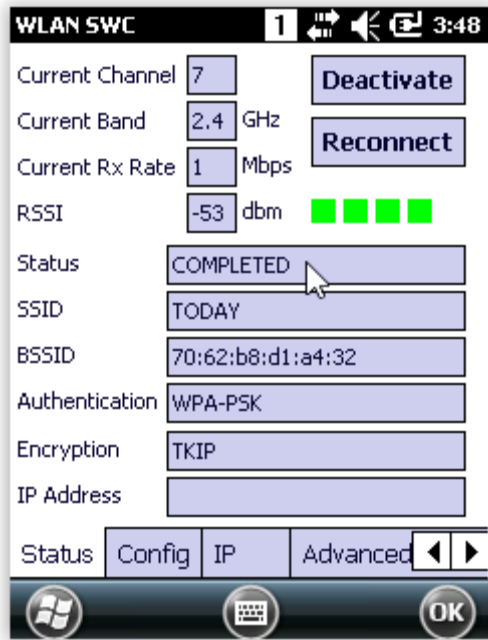
Simply enter your password if the scan was successful.



Activate the profile you have created

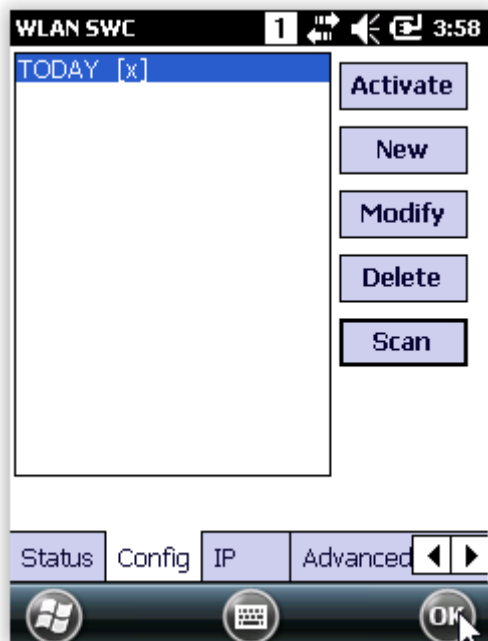


Select the Status tab

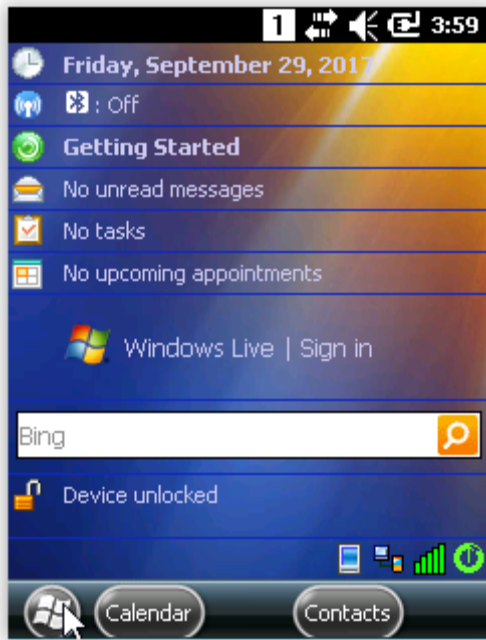


When the Status says “COMPLETED” you are successfully connected to the Wifi.

If the status keeps jumping between Associating and Disconnected, either your SSID, Password or Assoc Mode has been entered incorrectly.



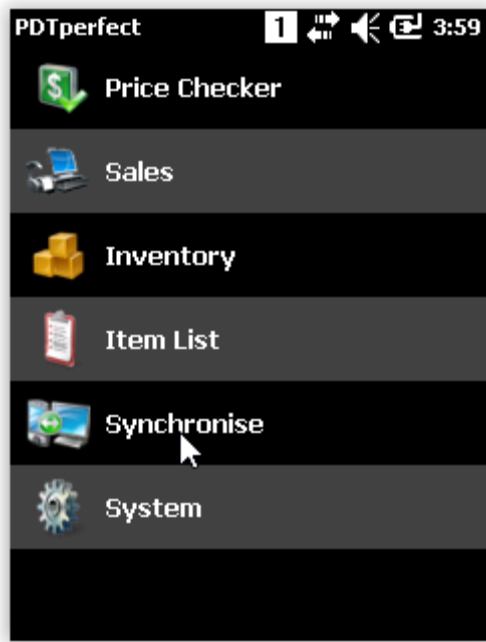
Press OK when you are finished to close the Dolphin Wireless Manager.



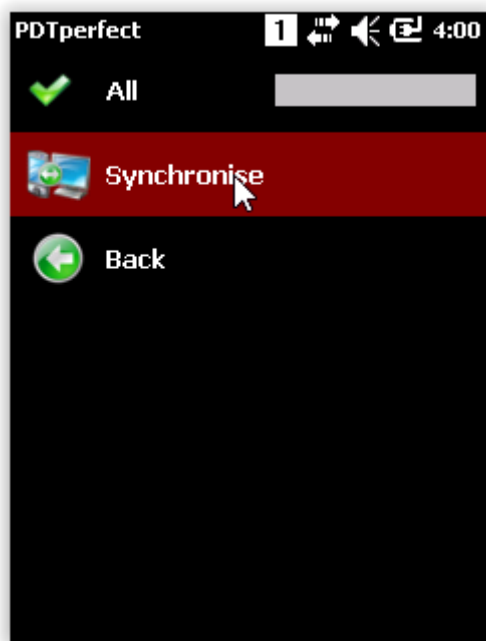
Press the Windows Icon



Select PDTperfect



Select Synchronise



Select Synchronise again

When the green bar is full, the synchronisation is completed and PDTperfect is ready to use.

Refer to PDTperfect User Guide for instructions on how to use PDTperfect software.